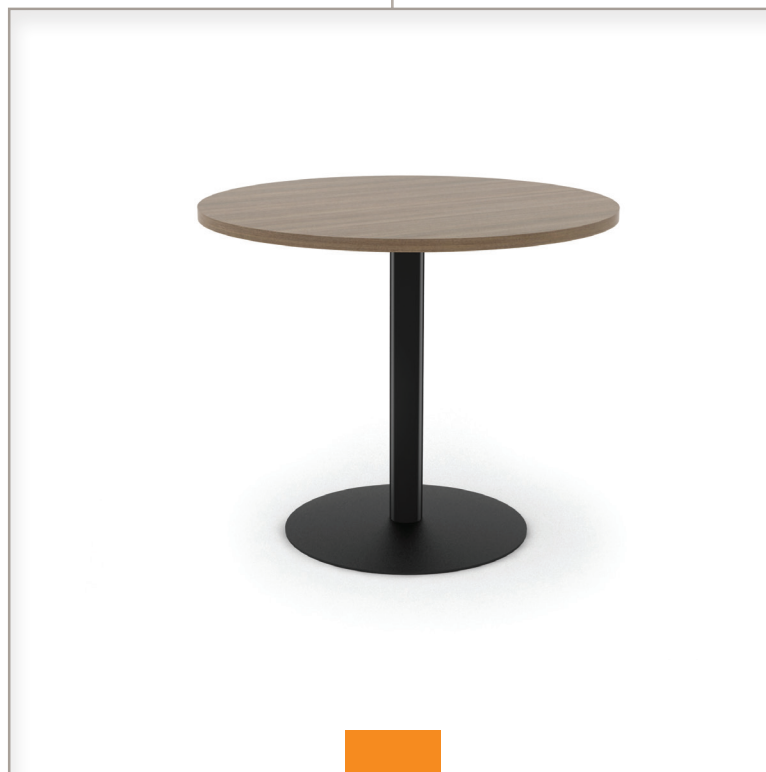


Round Dining Tables



Round Dining Tables



Black Metal Legs*



Silver Metal Legs*

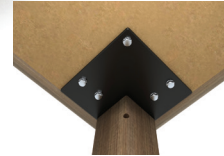
Standard edge color is black 3mm flat PVC, center pedestal tables are available with 3mm flat PVC edge or double contour edge. Contact your rep for available color match edge options.



Wood Legs with Apron shown with Double Contour Wood Edge**



Wood Legs Attached with Steel Plate***



Cast Iron Pedestal Base*



Cast Iron Disc Base*



Bar Height with Cast Iron Disc Base*

	diameter	height	bases: disc	pedestal	metal legs	wood legs	w/apron
Round Dining	30", 36", 42", 48"	30"	✓	✓	✓	✓	✓
Round Bar Height	30", 36", 42"	42"	✓	✓	X	X	X

Round tables shown in Studio Teak

Edges: *Metal leg and center pedestal tables' standard edge color is black 3mm flat PVC. Contact your rep for available color match edge options. **Wood leg table with apron is available with double contour edge only. ***Steel plate tables are standard with bullnose wood edge but have several wood edge options.

Bases: Cast iron center pedestal cross or disc, 1.25" solid oak legs attached with steel plate, 1.25" solid maple legs that include a four-sided apron

Bar height bases are available in most sizes

*Note: Other table sizes, base types, and edge treatments are available.